

plaid.is

PRESENTATION

# The Rise of the Logical Data Fabric in Institutional Research



Canadian Institutional  
Research and Planning  
Association

February 16, 2021





– Paul Moxon  
SVP Data Architectures & Chief  
Evangelist



– Patrick Loughheed  
Chief Technology Officer



The Rise of the Logical Data Fabric in Institutional  
Research

Speakers

## AGENDA

1. The Rise of the Logical Data Fabric in Institutional Research (Paul Moxon)
2. Live Demonstration (Pat Lougheed)
3. Questions

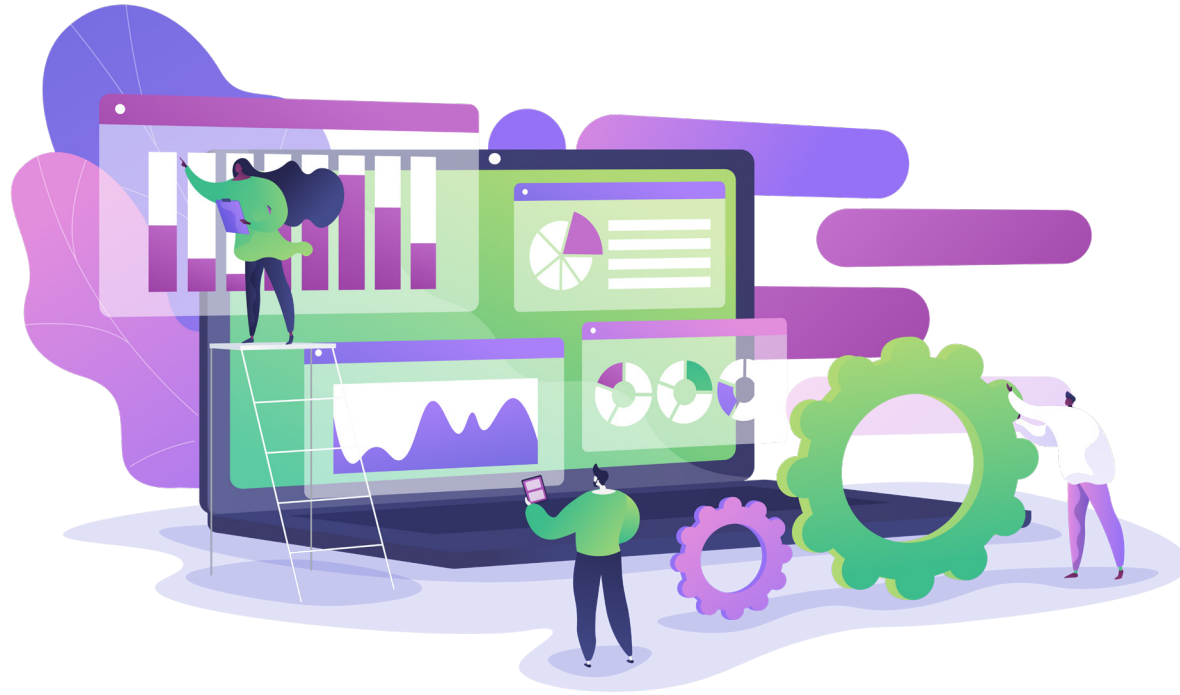


## ABOUT PLAID

Plaid Analytics helps educational institutions gain insight from data with

- data & analytics solutions,
- business process improvement,
- training & workshops





## ABOUT PLAID UNIVERSITY

Launched in 2010, PlaidU has grown to nearly 23,000 learners. We offer a wide variety of programs: undergraduate and graduate studies, law, medicine, and trades.

OUR DATA

What began  
as an idea has  
morphed into  
a full-fledged,  
imaginary,  
university.

Introducing...



plaid.is

OUR DATA

What began  
as an idea has  
morphed into  
a full-fledged,  
imaginary,  
university.

Introducing...



PLAID  
UNIVERSITY

## OPPORTUNITY

# Connecting our data puzzle

As a start-up, Plaid University chose to use a variety of information systems suited to a particular purpose, rather than one monolithic enterprise resource planning system.

We chose:

- Student Information System: Banner (on PostgreSQL)
- Learner Relationship Management System: Microsoft Dynamics
- Learning Management System: Canvas
- Data Warehouse: Amazon Web Services / PostgreSQL
- Miscellaneous Data Repositories: Spreadsheets

As a data-driven institution, we needed a way to bring together these disparate puzzle pieces.





OPPORTUNITY

# Connecting our data puzzle



OPPORTUNITY

# Connecting our data puzzle



OPPORTUNITY

# Connecting our data puzzle

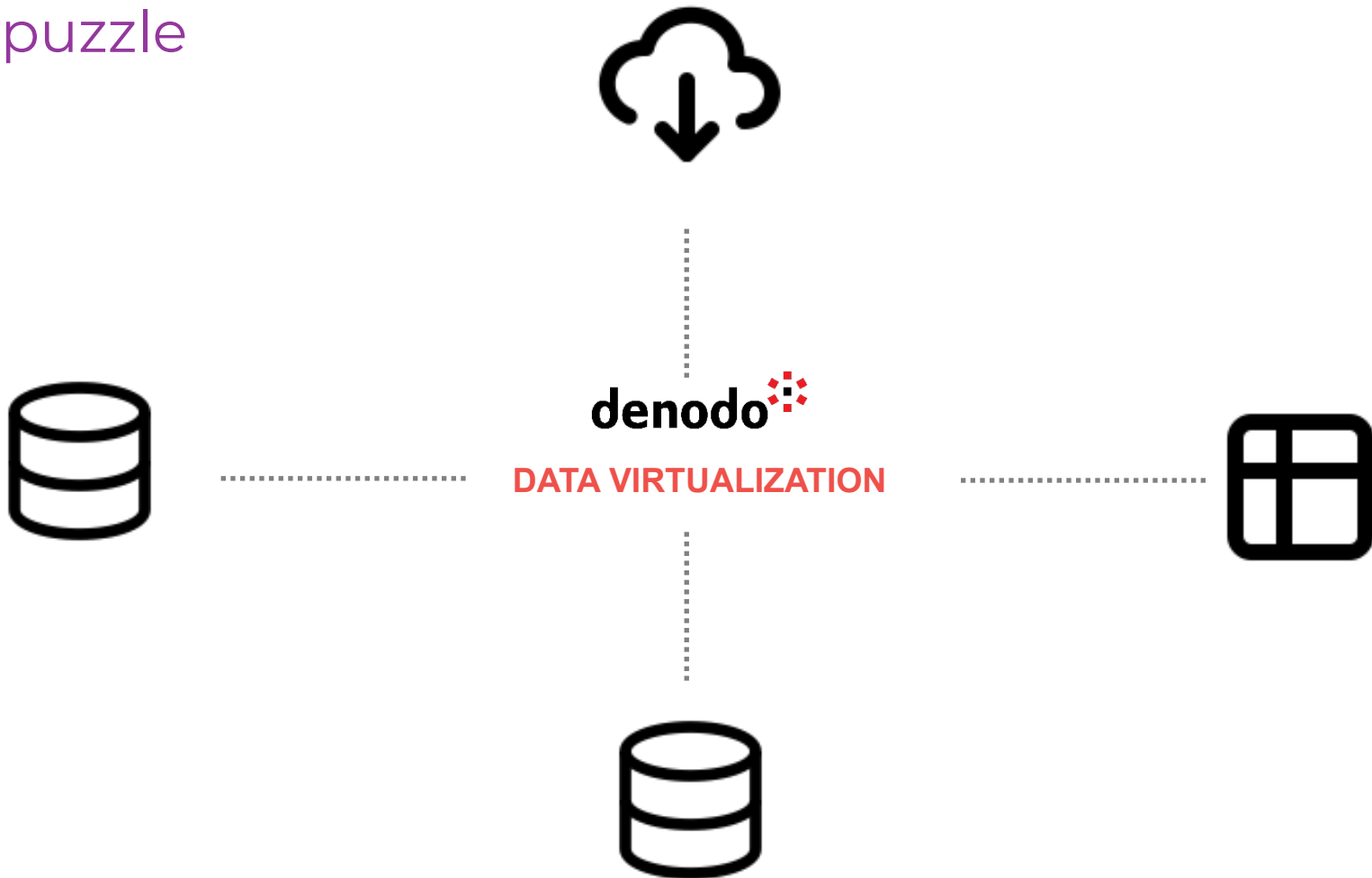


**denodo**   
DATA VIRTUALIZATION



OPPORTUNITY

# Connecting our data puzzle



## DEMONSTRATION

### Today's Demo

- Pulling data from a database
- Pulling data from a spreadsheet
- Pulling data in JSON form
- Using derived views to join and aggregate data
- Finding and governing data through the Denodo Data Catalog
- Retrieving and browsing data using web services



DEMONSTRATION

# The Rise of the Logical Data Fabric in Institutional Research

On to our demonstration! Let's see how Denodo makes data more accessible and secure for analysts.

This demonstration is the foundation of our workshop next week (February 23), where you'll get the chance to try it yourself.

If you haven't signed up yet, you can do so here: <https://at.plaid.is/DVworkshop>



## DEMONSTRATION

### Features We Didn't Cover

- Solution Manager: version control integration, SDLC (development > test > production), upgrades and server management
- Security: permissions to views, rows, and columns; integration with Active Directory and other authentication mechanisms
- Caching
- Pulling data from data lakes
- Interface views and development by contract
- Parallel processing using MPP query engines

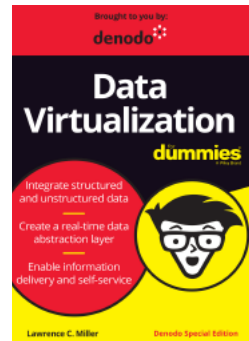


LEARN MORE

Want to learn  
more about data  
virtualization?

Download your  
free copy of  
*Data  
Virtualization for  
Dummies* here:

<https://at.plaid.is/DV>





plaid.is

## Take the next step

Contact us to discuss opportunities to make your data work for you.

**Patrick Lougheed**

Chief Technology Officer

604.306.0199

pat@plaid.is

<https://at.plaid.is/TalkToPlaid>



plaid.is

Any questions?

